

# Photoshop Test Questions

Name \_\_\_\_\_ Per. \_\_\_\_

Write the name of the tool next to its symbol.

- |  |       |  |       |
|--|-------|--|-------|
| 1.    | _____ | 15.   | _____ |
| 2.    | _____ | 16.   | _____ |
| 3.    | _____ | 17.   | _____ |
| 4.    | _____ | 18.   | _____ |
| 5.    | _____ | 19.   | _____ |
| 6.    | _____ | 20.   | _____ |
| 7.    | _____ | 21.   | _____ |
| 8.    | _____ | 22.   | _____ |
| 9.    | _____ | 23.   | _____ |
| 10.   | _____ | 24.   | _____ |
| 11.   | _____ | 25.   | _____ |
| 12.   | _____ | 26.   | _____ |
| 13.   | _____ | 27.   | _____ |
| 14.  | _____ | 28.  | _____ |

29. Photoshop is made by which company?

- A. Microsoft
- B. Dell
- C. Adobe
- D. Apple

30. To open a new file in Photoshop, you can...

- A. choose File > Open from the drop-down menu
- B. choose File > New from the drop-down menu
- C. Press Ctrl and O on the keyboard
- D. Both B and C

31. When you save your Photoshop file, it saves as a \_\_\_\_\_ file.

- A. .png
- B. .bmp
- C. .pdf
- D. .psd

32. When you make your document smaller by choosing Image > Image Size, unless you uncheck constrain proportions you are...

- A. resizing the image by removing part of it.
- B. resizing the image without removing any part of it.
- C. resizing the image by squeezing it together.
- D. resizing the image, but when finished it will look distorted.

33. What does the Unsharp Mask feature do?
- A. Makes the image less blurry.
  - B. Brightens the image.
  - C. Adjusts the image's color.
  - D. Adjusts the image's pixel aspect ratio.
34. To Crop an image means to...
- A. Resize the image.
  - B. Remove part of the image.
  - C. Resize the image by removing part of it.
  - D. None of the above.
35. The Zoom Slider of the Navigator Window allows you to...
- A. adjust the size and area of the document that is displayed
  - B. "zoom in" on your document
  - C. look at your document on a pixel by pixel basis
  - D. all of the above
36. When you were repairing the old photo of the lumber crew. What tool did you use to re-create the portion of the photo that had been torn away?
- A. Patch Tool
  - B. Rubber Stamp Tool
  - C. Clone Stamp Tool
  - D. Healing Brush Tool
37. Which tool was used to give one of the men in the photo a better facial complexion?
- A. Healing Brush Tool
  - B. Smudge Tool
  - C. Patch Tool
  - D. Sponge Tool
38. Which tool can be used to saturate or desaturate color in a photo?
- A. Healing Brush Tool
  - B. Rubber Stamp Tool
  - C. Burn Tool
  - D. Sponge Tool
39. The \_\_\_\_\_ gives you a good overview and detailed information about individual files that are in your folder before you bring them into Photoshop.
- A. Open File Window
  - B. File Browser
  - C. Open Document Window
  - D. Document Preview Window
40. Which tool can with one click of the mouse, select an entire area of a continuous color?
- A. Eye Dropper Tool
  - B. Lasso Tool
  - C. Magic Wand Tool
  - D. Polygonal Lasso Tool
41. Which one of the lasso tools selects an area by using a series of clicks, connecting a series of straight lines to enclose an area?
- A. Lasso Tool
  - B. Polygonal Lasso Tool
  - C. Magnetic Lasso Tool

D. Vertical Lasso Tool

42. When you were working with the Golden Gate Bridge photo, which tool did you use to brighten the side of your body that was facing the sun?

- A. Dodge Tool
- B. Burn Tool
- C. Sponge Tool
- D. Magic Wand Tool

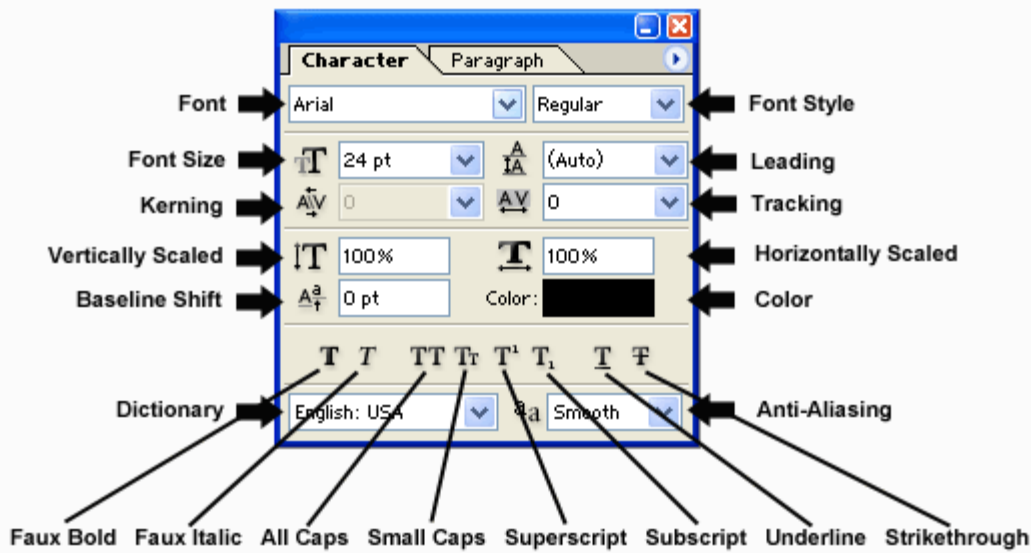
43. In the same photo, which tool did you use to make your shadow?

- A. Dodge Tool
- B. Burn Tool
- C. Sponge Tool
- D. Magic Wand Tool

44. When you selected part of the Sail Boats Photo to make the thought bubbles, you adjusted the \_\_\_\_\_ setting to make the edge of the ovals burry.

- A. feather
- B. style
- C. mode
- D. opacity

The Character Palette is shown below. Using it as a reference, complete the matching section that follows.



- 45. Font
- 46. Leading
- 47. Kerning
- 48. Tracking

- A. Changes the amount of space between letters
- B. Places space between characters
- C. The typeface of the text
- D. Changes the amount of space between lines of text

- 49. Baseline Shift
- 50. Superscript
- 51. Vertically Scaled
- 52. Horizontally Scaled

- A. Changes the character width
- B. The distance the type sits from its baseline
- C. Shrinks the character and moves it above the line
- D. Changes the character height

53. What happens when you simultaneously press the Ctrl and T keys?
- A. You can toggle between two files you have open.
  - B. You can “free transform” what you have selected.
  - C. You can turn on the tool presets
  - D. You can open and close the Tools Palette
54. When creating the magazine cover, you were able to move objects contained in different layers by choosing the \_\_\_\_\_ feature.
- A. lock layers
  - B. compile layers
  - C. merge layers
  - D. holding the shift key down, select each item, then move them simultaneously
55. The Brush size and type can be chosen in the ...
- A. Brush Palette
  - B. Brush Window
  - C. Settings Bar
  - D. Tool Options Bar
56. In the landscape drawing, which gradient tool was used to fill in the Sun?
- A. Linear
  - B. Radial
  - C. Angle
  - D. Reflected
57. Which gradient tool was used to fill in the Rainbow?
- A. Linear
  - B. Radial
  - C. Angle
  - D. Reflected
58. Which tool had the ability to create grass in the foreground of your drawing?
- A. Pen
  - B. Paint Bucket
  - C. Pencil
  - D. Brush
59. Pressing the Ctrl & R keys will...
- A. activate the Rectangular Marquee
  - B. regulates the file size of the document
  - C. randomizes the color
  - D. activates the rulers view.
60. What did you do to the Business Card document that allowed you to work on it as if it were "zoomed in", making it possible closer attention to details.
- A. opened it as a jpeg file
  - B. opened it as a bitmap file
  - C. set the document resolution lower
  - D. set the document resolution higher
61. While making the business card, which tool is useful in drawing shapes and was used to simultaneously draw and fill the Christmas Tree?
- A. Pen
  - B. Pencil
  - C. Direct Selection Tool

D. Freeform Pen Tool

62. After it was drawn, which tool was used to bend the Christmas tree's lines?

- A. Pen
- B. Pencil
- C. Direct Selection Tool
- D. Freeform Pen Tool

**True or False**

63. In Photoshop, you can adjust the color levels of the entire image, not its individual portions.

64. In order to adjust something in Photoshop you must first select the layer that it is in.

65. To make a new layer click File > New Layer

66. With the Vertical Type Tool, text can be typed backward, from right to left

67. The Opacity of a layer adjusts its transparency

68. The Pen Tool is the best tool to draw a smooth curved line.

69. The keyboard shortcut to save your file is Alt and S.

70. To place an outline around text, you need to add a stroke to it.